

KORIYAMA(JAPAN)

Welcome to KORIYAMA

Koriyama City, as the gateway to the Tohoku region, is a "transportation hub" with several major roads and railroads, and is adjacent to Fukushima airport. It is a "hub city" where people, goods, and information come and go.

With its easy access to Tokyo metropolitan area and an extensive network of support, Koriyama City is a highly attractive location for MICE.

Koriyama City developed rapidly as a result of the first national project of the Meiji Government, the Asaka Kaitaku (Reclamation of Asaka Field) and the opening of the Asaka Sosui Canal. This episode is registered as a Japan Heritage Site as "One Waterway' that Paved the Way to the Future".

Why Koriyama ?

10Reasons to Book Koriyama for Your Next Meeting

1. MICE Facilities and Unique Venues

◆Big Palette Fukushima

One of Koriyama's Landmarks



◆Kenshin Culture Center

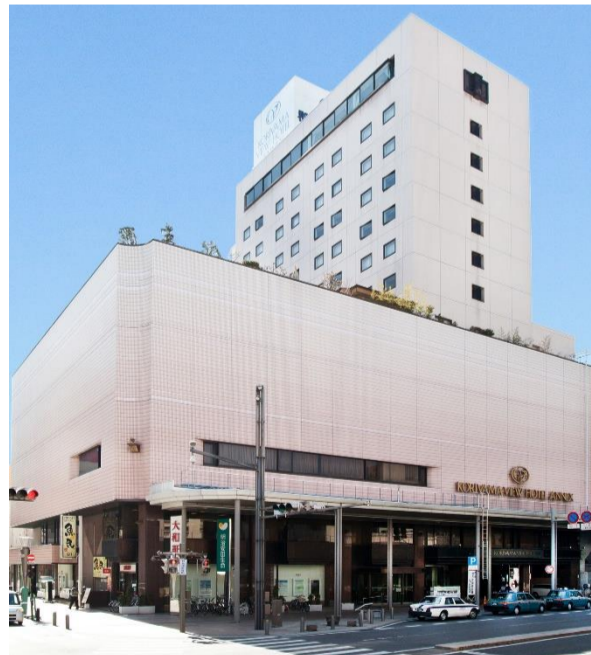


◆Hotel Hamatsu

It's called a county reception room



◆Koriyama View Hotel Annex



◆Shiki no sato Ryokusuien Flower Garden(Unique Venue)



2. Accommodations

City center area Hotels: About 2,800rooms, About 3,600 persons

Bandai Atami area (Onsen ryokan)

: About 600rooms, About 3,000 persons

CENTER AREA



BANDAI ATAMI



3. Support for holding

◆Subsidies

International Convention	¥7,500,000(Maximum)
Excursion	¥600,000(Maximum)
Shuttle Bus	¥100,000(Maximum)

◆Fixtures (Free rental)



◆Welcome sign



◆attraction



4. Extra Support for International Conventions

- ◆Halal support is available.
- ◆Vegetarian support is available.
- ◆Wi-Fi is available.
- ◆Japanese cultural experience is available.
- ◆Interpreters can be arranged.

5. Sustainability and the Revitalization of Fukushima

◆Renewable Energies

Koriyama City promotes the use of renewable energy through the "International Urban and Regional Cooperation Program" with Essen, Germany.

◆Separating Garbage (for recycling, etc.)

Koriyama City promotes the 5R(Reduce, Reuse, Recycle, Refuse, Repair)

◆Paperless

◆Reconstruction of Fukushima

Hosting a convention in Koriyama will have a large economic ripple effect on the region and help the reconstruction of Fukushima.

◆SDGs Future city



<https://www.un.org/sustainabledevelopment/>

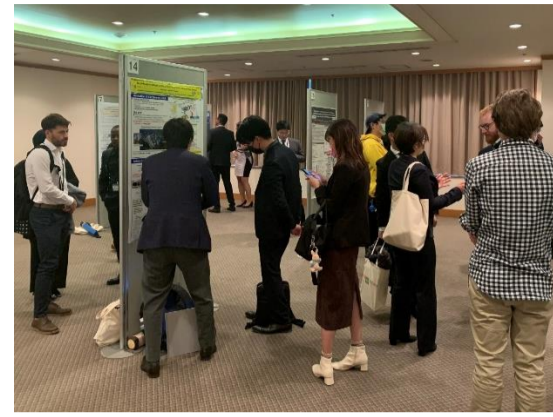
◆Safe Community



6. Experience and Testimonials

◆International Youth Nuclear Conference 2022(IYNC2022)

November 27, 2022 - December 2, 2022 Hotel Hamatsu



IYNC2023, an international conference for young professionals under 39 years of age involved in nuclear and radiation applications worldwide, was held in Japan for the first time. The situation in Ukraine forced a sudden change of venue, and the PCO was reluctant to host the conference with only four months to prepare, so the Koriyama Convention Bureau formed a consortium of local companies to organize the conference.

The conference was a success thanks to the attentive support provided by the experienced staff of the Koriyama Convention Bureau. (by Kota Kawai, President of Japan Atomic Energy Society Young generation Network)

IYNC2022 received the "Award for Contribution to Attracting and Hosting International Conferences" sponsored by JNTO in 2023.

◆Asian-Pacific Regional IAU Meeting 2023(APRIM2023)

August 7, 2023 - August 12, 2023 Big Pallet Fukushima

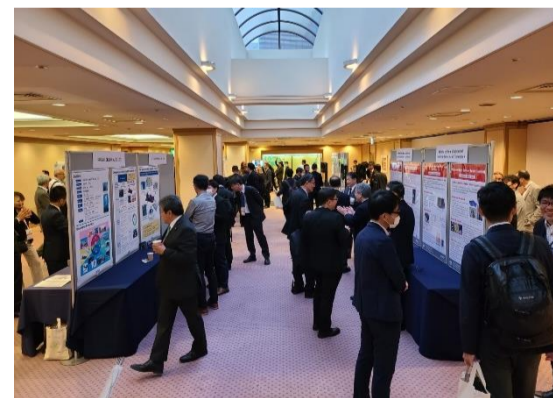


One of the main purposes of holding this conference in Koriyama City, Fukushima Prefecture, was to deepen the understanding of the current situation in Fukushima regarding safety and reconstruction.

The Koriyama Convention Bureau provided a variety of support for the conference, including the preparation of local information at the time of the bid, introductions and meetings with local vendors, material support, provision of attractions to experience Japanese culture, and grants. (by Organizational Committee Chairman Junichi Watanabe)

◆The 5th RD20 Conference 2023(RD20 2023)

October 4, 2023 - October 6, 2023 Hotel Hamatsu



RD20 is an international initiative that aims to promote innovation by strengthening collaboration among major research institutions in G20 countries and regions to achieve carbon neutrality.

The Koriyama Convention Bureau provided a lot of support, including coordination with the venue and local businesses, guidance at the station, and arrangements for local entertainment.

(by Dr. Noriko Yoshizawa, the Secretary-General RD20,

Global Zero Emission Research Center, National Institute of Advanced Industrial Science and Technology (AIST))

7. Pre-Post Programs

- ◆ A walk through "Samurai City" Aizu Wakamatsu
- ◆ A Tour of the Triple Disaster-Affected area
Learn about the Revitalization Efforts of Fukushima

8. Discover Koriyama: Tourist Attractions

- ◆ picturesque scenery This beautiful view will capture your heart.



- ◆ activity



pastry making



Hyottoko Dance



Imoni Party



Folk craft painting

- ◆ shopping

Department store: USUI

Shopping center: S-PAL / MOLTI / ATi / AEON TOWN / THE MALL

(¥100shop, MUJI, Stationary, knife etc.)

Japanese Traditional Goods: WAKUYA(Kimono) / Takashiba-Deko-Yashiki(Traditional Craft Doll)



9. Taste Koriyama: Foods & Drinks

- ◆ Foods: Confections / Ramen / Bread / Koi(carp)



- ◆ Drink(Made in Koriyama): Japanese Sake / Whisky / Wine



10. Access

Shinkansen/TOKYO	76 minutes (50trips/day)
Flight/OSAKA(ITAMI)	70 minutes (4flights/day)
SAPPORO	75 minutes (1 flight/day)

Koriyama



Fukushima Airport (fks-ab.co.jp)

